

**Anti-Apolipoprotein F Rabbit Monoclonal Antibody**  
**Catalog # ABO15594****Specification**

---

**Anti-Apolipoprotein F Rabbit Monoclonal Antibody - Product Information**

Application	WB, IF, ICC
Primary Accession	<a href="#">Q13790</a>
Host	Rabbit
Isotype	IgG
Reactivity	Human
Clonality	Monoclonal
Format	Liquid

**Description**

Anti-Apolipoprotein F Rabbit Monoclonal Antibody . Tested in WB, ICC/IF applications. This antibody reacts with Human.

**Anti-Apolipoprotein F Rabbit Monoclonal Antibody - Additional Information**

**Gene ID** 319

**Other Names**

Apolipoprotein F, Apo-F, Lipid transfer inhibitor protein, LTIP, APOF

**Calculated MW**

33 kDa KDa

**Application Details**

WB 1:500-1:2000<br>ICC/IF 1:50-1:200

**Contents**

Rabbit IgG in phosphate buffered saline, pH 7.4, 150mM NaCl, 0.02% sodium azide and 50% glycerol, 0.4-0.5mg/ml BSA.

**Immunogen**

A synthesized peptide derived from human Apolipoprotein F

**Purification**

Affinity-chromatography

**Storage**

**Store at -20°C for one year. For short term storage and frequent use, store at 4°C for up to one month. Avoid repeated freeze-thaw cycles.**

**Anti-Apolipoprotein F Rabbit Monoclonal Antibody - Protein Information**

**Name** APOF

**Function**

Minor apolipoprotein that associates with LDL. Inhibits cholesteryl ester transfer protein (CETP) activity and appears to be an important regulator of cholesterol transport. Also associates to a lesser degree with VLDL, Apo-AI and Apo-AII.

**Cellular Location**

Secreted

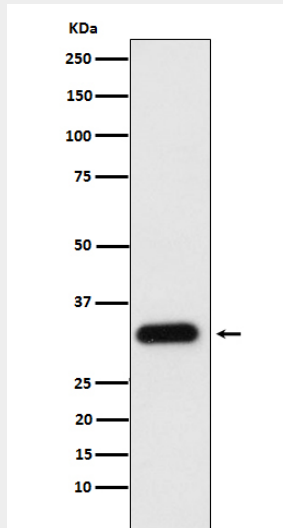
**Tissue Location**

Expressed by the liver and secreted in plasma.

**Anti-Apolipoprotein F Rabbit Monoclonal Antibody - Protocols**

Provided below are standard protocols that you may find useful for product applications.

- [Western Blot](#)
- [Blocking Peptides](#)
- [Dot Blot](#)
- [Immunohistochemistry](#)
- [Immunofluorescence](#)
- [Immunoprecipitation](#)
- [Flow Cytometry](#)
- [Cell Culture](#)

**Anti-Apolipoprotein F Rabbit Monoclonal Antibody - Images**

Western blot analysis of Apolipoprotein F expression in human plasma cell lysate.